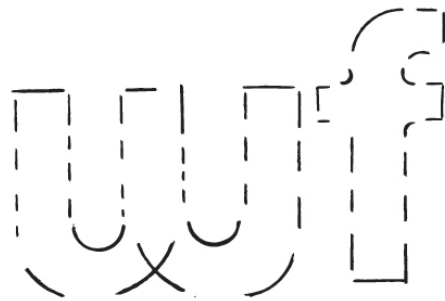


Western Front Visual Story

A guide to to help you plan your visit



Visitor Information

Gallery Tuesday – Saturday: 1:00 – 5:00 p.m.
Sunday – Monday: Closed
Free admission

Office Tuesday – Friday: 9:00 a.m. – 5:00 p.m.

Archives The archives are open by appointment to all researchers on Thursdays and Fridays. Please contact our archivist, Anna Tidland, to plan your visit.

E-mail: annatidlund@westernfront.ca

COVID-19 Safety Measures

While not mandatory, Western Front highly encourages the use of masks while in the public areas of our building.

If you are experiencing any symptoms of COVID-19, we ask you to visit another time.

Maintain social distance from other visitors.

Use the hand sanitizer provided.

All current and future special events and activities at Western Front will follow Public Health Office (PHO) orders on gatherings and events.

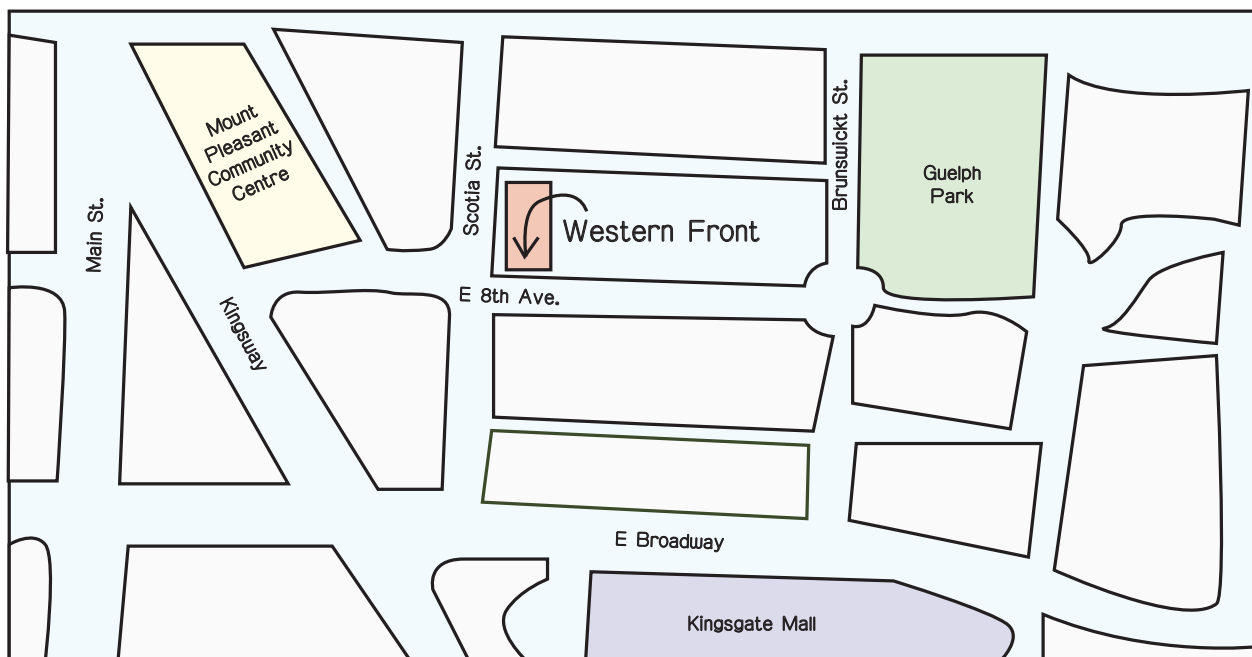
How To Get Here



Western Front

Location Western Front is located at the corner of E 8th Ave and Scotia St in the Mount Pleasant neighborhood of Vancouver.

Address 303 E 8th Ave
Vancouver BC V5T 1S1
Canada



[Link to Google map](#)

There are many ways of getting here with public transit. There are also some parking options nearby.

Car/Taxi It is possible to drop off passengers at the main entrance of Western Front. There is street parking available on the blocks surrounding, including free two hour street parking on Scotia St between E 7th and E 8th Ave, as well as around Guelph Park. There are several paid parking lots along Kingsway, Broadway, and Main St.

Accessible parking is currently very limited, with the closest options being several blocks away on 10th Ave and Main St.

Skytrain The nearest stations are Main St-Science World and Broadway-City Hall Station. From either station, Western Front is about a ten minute bus ride or a fifteen minute walk. Both stations are wheelchair accessible.

Walking from SkyTrain Main Street-Science World Station to Western Front

(about 15 minutes)

- Exit the station and head south on Main St to 8th Ave.
- Head east on 8th Ave to Scotia St and Western Front is located on this corner.
- Main St is a very busy street and you will pass several intersections.
- There is a steady incline going up starting from 2nd Ave.

Walking from SkyTrain Broadway-City Hall Station to Western Front

(about 15 minutes)

- Exit the station and head east on W Broadway to Scotia St.
- Head north on Scotia St to 8th Ave and Western Front is located on this corner.
- W Broadway is a very busy street and you will pass several intersections.
- There is a slight incline going up from Manitoba St to Quebec St.

Bus There are many bus stops on Broadway (8,9,99), Kingsway (19), and Main St (3).

Westbound buses

Bus no. 8,9 and 99

- Get off at stop at Broadway and Scotia St.
- Turn right (north) at Scotia St at the Pizza Pizza to 8th Ave and Western Front is located on this corner.

Eastbound buses

Bus no. 8 and 9:

- Get off at Kingsway stop in front of Kingsgate Mall.
- Cross the road at Kingsway to the other side of Broadway.
- Turn right (east) on Broadway.
- Then left (north) on Scotia St to 8th Ave.
- Western Front is located on this corner.

Bus no. 99:

- Get off at Kingsway stop in front of Nesters Market.
- Turn left on Kingsway so you are heading north to 8th Ave.
- Turn right (east) on 8th Ave at the cross walk to Scotia St.
- Western Front will be on your left.

Southbound buses

Bus no. 8 and 19

- Get off at Kingsway and Main St.
- Head south to the cross walk at 8th Ave and turn left (east) to Scotia St.
- Western Front will be on your left.

Bus no. 3

- Get off at Broadway and Main St.
- Head north on Main Street and turn right on Kingsway and left on 8th Ave to Scotia St.
- Western Front will be on your left.

Northbound buses

Bus no. 8 and 19

- Get off at Kingsway and Broadway.
- Head north toward 8th Ave to the cross walk and turn right to Scotia St.
- Western Front will be on your left.

Bus no. 3

- Get off at Broadway and Main St
- Head north on Main St. and turn right on Kingsway and left on 8th Ave to Scotia St.
- Western Front will be on your left.

Bicycle

There are racks for locking bikes in front of Western Front. There is a Mobi by ShawGo docking station on the corner of E 8th Ave and Scotia St.



Bicycle rack

Building Western Front is a large three story heritage building. It can be recognized by its green wooden siding and its false front façade.

Entrance These are the doors to enter Western Front. Each door measures 82 cm in width and swings outwards. The door to the right can be opened using the knob while the other can be opened from the inside when necessary.

The doors are typically unlocked for special events. Occasionally, they may be kept locked during office and gallery hours. To enter when the doors are locked, buzz 01 on the intercom to the left of the entrance and a staff member will greet you in the lobby. The entrance is not currently equipped with automatic doors.



Entrance door

Reception

This is the reception area. It is located immediately to the right side of the lobby upon entering the building. During gallery hours, it is attended by a staff member who can assist with inquiries, manage coat and bag check, and provide information about the exhibitions and programs. During events, a Western Front staff member is present to manage tickets at the door, while another staff member manages coat and bag check behind the reception desk.



Reception area

Gallery

This is our gallery space. It is located on the ground floor and can be identified by the sign on the doorway header. The space changes regularly to meet the needs of our temporary exhibition program. We recommend that you check the accessibility information on the event listing before visiting, which will describe audio, visual, spatial, and other sensory elements for each exhibition, as well as details of its content.



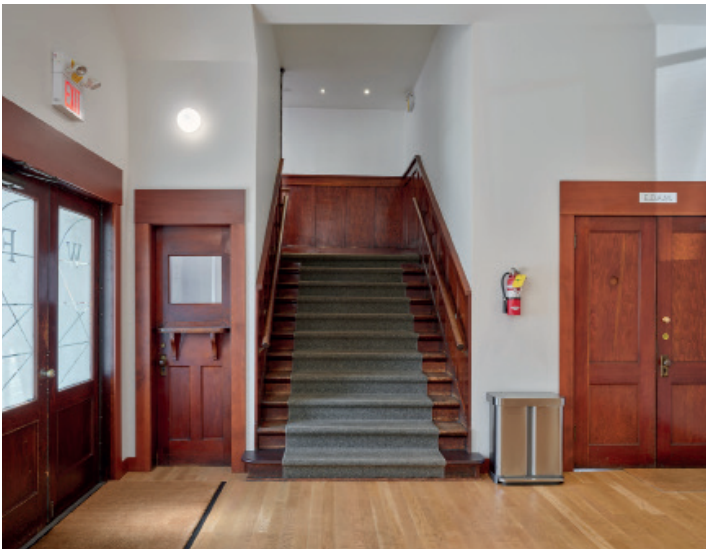
Entrance to gallery



Inside gallery

Stairs

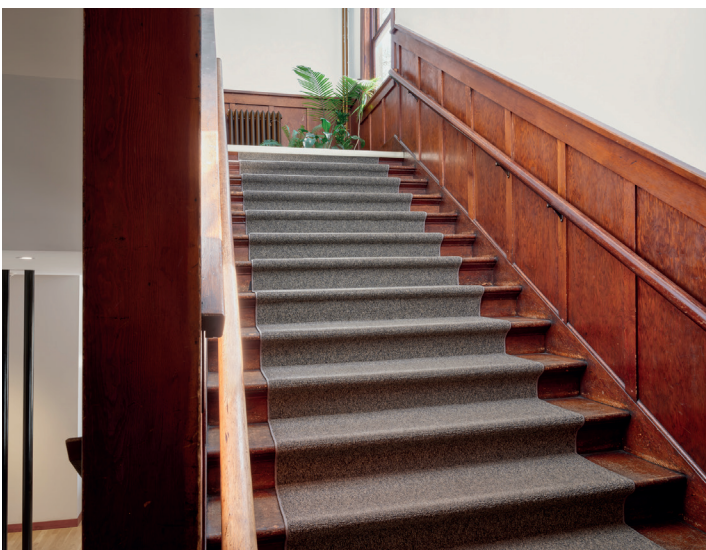
Here is the staircase to access our second floor which houses the Grand Luxe Hall, archives, library, guest accommodation, and AV studios. There are twenty-six stairs, with a landing and turn after the first eleven stairs. We are working towards making the second floor an accessible space for wheelchair users in the future.



1. Stairs at entrance (11 steps)



2. Landing and turn



3. Last part of stairs (15 steps)



4. Hallway upstairs

Grand Luxe Hall

This is the Grand Luxe Hall, our main performance space. It is located on the second floor and can be identified by the sign on the doorway header. The space and seating configuration changes regularly to meet the needs of our live events program. We recommend that you check the accessibility information on the event listing before visiting, which will describe audio, visual, spatial, and other sensory elements for each exhibition, as well as details of its content. During events, a staff member will be stationed near the door to assist with the audience's entrance and exit to the space, and a bar with refreshments will be available just outside the Grand Luxe Hall.



Entrance to Grand Luxe Hall



Inside Grand Luxe Hall

Washrooms

There are two all gender washrooms located on the ground floor and one on the second floor. There is a partially accessible washroom located on the ground floor that is 3.72m² and is fitted with handrails.



Entrance ground floor washrooms



Inside partially accessible ground floor washroom



Inside ground floor washrooms



Entrance first floor washroom



Inside first floor washroom

Accessibility

- Our second floor is currently not accessible to wheelchair users. The second floor houses the Grand Luxe Hall, archives, library, guest accommodation, and AV studios. Events in the Grand Luxe Hall are made available for free online via high-quality livestream.
- The ground floor is wheelchair accessible. The ground floor houses the box office, gallery, EDAM dance studio, and staff offices.
- Our exhibitions are always free, and our events are by donation.
- Our didactic material is available in English, and our events are typically spoken in English unless otherwise noted.
- Assistance animals are always welcome.
- As we are in a shared building, we cannot guarantee a scent-free space. However, we aim to provide a scent-reduced space.
- Unfortunately, we do not have reserved accessible parking in front of our building. Car and taxi drop-offs are possible.
- Visitors with an Access 2 card or CNIB card are entitled to free admission for a support person to ticketed events. Please contact us to reserve a ticket for your support person at the time of your booking.
- We can offer American Sign Language interpretation. Please reach out to us two weeks in advance in order for us to secure an interpreter.
- Our website has been developed to conform to the W3C accessibility guidelines for level AA compliance. We have endeavoured to conform to all the presented guidelines in level AA, wherever possible. It is possible to increase (or decrease) the size of all the text on the pages of most websites. You can do this by using the font size controls integrated in your web browser.

Contact

Susan Gibb
susangibb@westernfront.ca
+1 (604) 876-9343